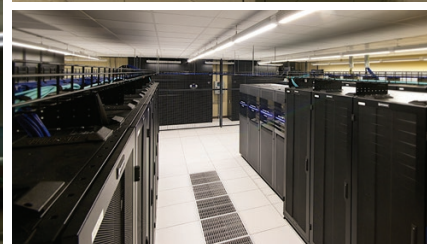


AgFirst Farm Credit Bank

Headquarters and Data Center - Columbia, SC



AgFirst Farm Credit Bank relocated their corporate headquarters office to an existing 18-story high rise on Columbia's Main Street. The upfit project includes 6 floors of the building with scope covering HVAC upgrades. The project consisted of reworking ductwork, adding new VAV boxes to accommodate the increased zoning system and an upgrade of HVAC controls.

The AgFirst Data Center was an additional phase of this overall project. This project was a complete demolition and subsequent retrofit of a building adjacent to the Tower. Scope included Liebert CRAC units and a fully redundant system to support bank operations. Additional roof top units to condition the remaining offices in the building.